

# FULL THROTTLE Deals



**Koken**  
**36PC 12PT  
SOCKET SET**  
1/2" square socket set in  
metric and imperial  
See page 4

**\$429**  
**SAVE  
14%**



## TOP TOOLS Best Prices

**FROM THESE  
PREMIUM  
BRANDS**

**Koken**

**STAHLWILLE**

**Abbott & Ashby**

**<MAUN>**

**COAST**



**THOR**  
SOFT FACED HAMMERS

**RECHARGEABLE  
HEAD LAMP**

**COAST XPH25R**

See page 10

**SAVE  
25%**

- ✓ 410 lumens (high)
- ✓ 104m beam distance (high)
- ✓ 9hr 30m runtime (low)



**STAHLWILLE**

**\$184**

**VALUE  
PACKS**

See page 5

**SPC METRIC RING DEEP  
OFFSET SPANNER SET**



**SAVE  
10%**

**FREE  
WITH  
PURCHASE**

**PG 6  
for details**



**Get a FREE  
Stahlwille 25pc Socket Set  
(Metric & Imperial 3/8" Drive)**



# Ko-ken

Ko-ken Tools is a fourth generation family owned and operated business in Japan.

Born from a passion for all things automotive, Ko-ken is the world leader in producing high-quality hand sockets, socket wrenches & accessories. The entire manufacturing process is in-house at Ko-ken, from design to cold forging, heat treatment and plating. The company's success comes from a drive to continually push the barriers of quality and precision.

## 7PC INHEX SOCKET SET

### KORS2010M/7-L25

- Set of 7, Inhex bit socket set on rail
- 1/4" input square drive
- 150mm long rail
- Sizes: 3, 4, 5, 6, 7, 8, 10mm

**\$49**

SAVE 17%



## 8PC INHEX SOCKET SET

### KORS2010A/8-L25

- Set of 8, Inhex bit socket set on rail
- 1/4" input square drive
- 150mm long rail
- Sizes: 1/8, 9/32, 3/16, 7/32, 1/4, 5/32, 5/16, 3/8"

**\$59**

SAVE 14%



## 200MM RATCHET POLISHED HANDLE

**\$55**

SAVE 15%

### KO3753P

- 3/8" square drive reversible ratchet
- 24 teeth
- 200mm long



## 250MM RATCHET POLISHED HANDLE

**\$75**

SAVE 16%

### KO3753P250

- 3/8" square drive reversible ratchet
- 24 teeth
- 250mm long



## 3/8" DR MULTI-PURPOSE RATCHET

### KO3753SM

- 3/8" square drive ratchet
- For use with 3/8" DR handles
- 24 teeth
- 81mm long (short)

**\$75**

SAVE 16%



## 115MM RATCHET POLISHED HANDLE

SAVE 18%

**\$45**

### KO2753P

- 1/4" square drive reversible ratchet
- 20 teeth
- 115mm long



## 6PC NUT GRIP® SOCKET SET

### KORS2450MS/6

- Set of 6, NUT GRIP® socket set on rail
- 1/4" input square drive
- 150mm long rail
- Sizes: 7, 8, 10, 12, 13, 14mm

SAVE 13%

**\$65**

NUT GRIP® is Ko-ken's special design for non-magnetic nuts/bolts to be held firmly in a 6-point socket







## FELXIBLE RATCHETS - POLISHED HANDLE



- 3/8" square drive
- 24 teeth

Part Number	Description	PRICE	SAVE
KO3774P	Flexible reversible ratchet	\$89	18%
KO3774PB	Flexible reversible ratchet w/ quick release button	\$99	17%

## TORX® SOCKET SET ON MAGNETIC RAIL

## KORS3025Z/8-L50

- Set of 8, TORX bit socket set on magnetic rail
- 3/8" input square drive
- 200mm long rail
- Sizes: T20, T25, T27, T30, T40, T45, T50, T55



SAVE 13%

\$135

Koken

## SPARKPLUG SOCKET WITH MAGNET

\$32

SAVE 16%

## KO3305P14

- 12 Point spark plug socket with magnet
- 3/8" input square drive 14mm



## 9PC 3/8" DR 12PT SOCKET SET



\$59

SAVE 14%

## KORS3405A/9

- Set of 9, 12 point socket set on rail
- 3/8" input square drive
- 200mm long rail
- Sizes: 1/4, 5/16, 3/8, 7/16, 1/2, 9/16, 5/8, 11/16, 3/4"

## 9PC METRIC SOCKET SET WITH RATCHET

## KO3285ZE

- Set of 9, 6 point socket set on rail
- 3/8" input square drive
- 200mm long rail
- 72 Teeth Ratchet (3725Z-72)
- Z Series quick spinner (3756Z)
- Sizes: 8, 10, 12, 13, 14, 17, 19mm



SAVE 10%

\$189

## 1/2" DR STUBBY RATCHET



SAVE 15%

\$55

## KO3749S-1/2

- 1/2" square drive ratchet
- Short ratchet with 24 teeth
- Length 110mm

SAVE 17%

## KO4768N600

- Swivel handle breaker bar
- Length 600mm
- 1/2" square drive



\$95

## KO4768N450

- Swivel handle breaker bar
- Length 450mm
- 1/2" square drive

## SWIVEL HANDLE 1/2" DRIVE

\$63

SAVE 15%







# Koken

## 36PC 12PT SOCKET SET



**\$429**

**SAVE 14%**

**KO4279AM**

- 36pc 12pt, 1/2" square socket set in metric and imperial
- Sizes: Metric 10 - 32mm; Imperial 3/8" - 1 1/4"
- Includes 1/2" reversible ratchet, extensions, universal joint and T-Handle

**SAVE 11%**



## DRAIN PLUG KEY SET

**\$85**

**KO4202**

- 1/2" square drive drain plug keys set
- Includes: 8Sx10S, 8Hx3/8H, 10Hx11H, 12Hx13H, 14Hx17H, 19H

**\$99**

**SAVE 13%**

## LOCK NUT BUSTER IN SET



**KO14124/3**

- 3pc set double ended lock nut buster set for rear wheel nut
- 1/2" square drive
- Includes: 21 x 24.5mm, 26 x 27.5mm and extension bar

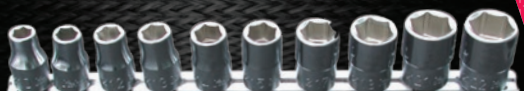
## 10PC METRIC SOCKET SET

**KORS4400M/10**

- Set of 10, 6 point metric chrome sockets on rail
- 1/2" input square drive
- 300mm long rail
- Sizes: 10, 11, 12, 13, 14, 15, 17, 19, 21, 22mm

**SAVE 16%**

**\$75**



**\$129**

**SAVE 13%**

## 10PC METRIC INHEX SOCKET SET ON RAIL

- Set of 10 metric inhex socket set on rail
- 1/2" drive
- Sizes: 4, 5, 6, 7, 8, 10, 12, 14, 17, 19mm



**KORS4012M60/10**

**\$199**

**SAVE 18%**

## SWIVEL HANDLE 3/4" DRIVE



**KO67681000**

- Swivel handle breaker bar
- Length 1,000mm
- 3/4" square drive

## RATCHET 1" DRIVE

**SAVE 14%**

**KO8749**

- Ratchet handle
- Length 800mm
- 1" square drive



**\$269**

## SWIVEL HANDLE 1" DRIVE

**SAVE 12%**

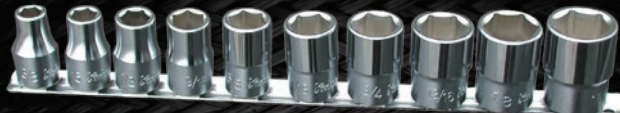
**KO8768**

- Swivel handle breaker bar
- Length 600mm
- 1" square drive



**\$259**

## 10PC IMPERIAL SOCKET SET



**\$79**

**SAVE 16%**

**KORS4400A/10**

- Set of 10, 6 point imperial chrome sockets on rail
- 1/2" input square drive
- 300mm long rail
- Sizes: 3/8, 7/16, 1/2, 9/16, 5/8, 11/16, 3/4, 13/16, 7/8, 15/16"

✓ **Engineered to provide a reliable grip and minimise rounding of fasteners**





## Tools that inspire.

Industry and the trades have relied on the German Engineering and precision of STAHLWILLE tools for generations. This is because our know-how helps them to produce excellent results. Precise, fast and safe, in production, repair and maintenance. Day in, day out.



## 6PC OPEN END SPANNER SET



SWVP10/6

- Metric open end spanner set
- Sizes: 10x11, 12x13, 14x15, 16x17, 18x19, 20x22mm

**\$139**  
SAVE 10%

## 7PC IMPERIAL COMBINATION SPANNER SET



SWVP13A/7

- Imperial ring open end spanner set
- Sizes:  $\frac{3}{8}$ ,  $\frac{7}{16}$ ,  $\frac{1}{2}$ ,  $\frac{9}{16}$ ,  $\frac{5}{8}$ ,  $\frac{11}{16}$ ,  $\frac{3}{4}$ "

**\$250**  
SAVE 10%

## 9PC METRIC COMBINATION SPANNER SET

SWVP13/9

- Metric ring open end spanner set
- Comes in plastic display pack
- Sizes: 8, 10, 12, 13, 14, 15, 16, 17 & 19mm



**\$278**  
SAVE 10%

## 5PC DOUBLE OPEN ENDED SPANNER SET

SWVP10A/5

- Comes in a plastic display pack
- Sizes:  $\frac{3}{8}$  x  $\frac{7}{16}$ ;  $\frac{1}{2}$  x  $\frac{9}{16}$ ;  $\frac{5}{8}$  x  $\frac{11}{16}$ ;  $\frac{3}{4}$  x  $\frac{7}{8}$ ;  $\frac{15}{16}$  x 1"

**\$166**  
SAVE 10%



**VALUE PACKS**

Save on Stahlwille spanners with these value pack sets!

## 5PC METRIC RING DEEP OFFSET SPANNER SET



SWVP20/5

- Comes in a plastic display pack
- Sizes: 10x11, 12x13, 14x15, 16x17, 18x19mm

**\$184**  
SAVE 10%

## 5PC IMPERIAL RING DEEP OFFSET SPANNER SET



SWVP20A/5

- Comes in a plastic display pack
- Sizes:  $\frac{1}{4}$  x  $\frac{5}{16}$ ;  $\frac{3}{8}$  x  $\frac{7}{16}$ ;  $\frac{1}{2}$  x  $\frac{9}{16}$ ;  $\frac{5}{8}$  x  $\frac{3}{4}$ ;  $\frac{11}{16}$  x  $\frac{13}{16}$ "

**\$242**  
SAVE 10%

## 4PC METRIC SHORT RING SPANNER SET



SWVP21/4

- Comes in a plastic display pack
- Sizes: 8 x 10, 12 x 13, 14 x 15, 16 x 17mm

**\$161**  
SAVE 10%

## 2PC IMPERIAL FLARE NUT SPANNER SET

SWVP24A/2

- Comes in a plastic display pack
- Sizes:  $\frac{3}{8}$  x  $\frac{7}{16}$ ;  $\frac{1}{2}$  x  $\frac{9}{16}$ "

**\$161**  
SAVE 10%



## 4PC TORX® DOUBLE ENDED SPANNER SET



SWVP21TX/4

- Comes in a plastic display pack
- Sizes: E6 x E8, E10 x E12, E14 x E18, E20 x E24

**\$224**  
SAVE 10%



## 5PC METRIC DOUBLE ENDED RING SPANNER SET

SWVP23/5

- Comes in a plastic display pack
- Sizes: 10 x 11, 12 x 13, 14 x 15, 16 x 17, 18 x 19mm

**\$206**  
SAVE 10%

## 3PC METRIC FLARE NUT SPANNER SET

SWVP24/3

- Comes in a plastic display pack
- Sizes: 8 x 10, 11 x 13, 12 x 14mm



**\$149**  
SAVE 10%





Scan the QR Code for kit contents



## TOOL TROLLEY SETS

Introducing the Stahlwille Toolset with TTS93 Tool Trolley - a premium tool collection for professionals.

This German made set is tough, designed to handle any job and sets the standard for high quality professional tools.

### FEATURES

- ✓ High static load capacity (up to 500kg, bottom drawer up to 45kg)
- ✓ Two-step safety; central locking and an anti-tilt mechanism
- ✓ Robust, oil and acid-resistant wheels, protecting bearings from debris
- ✓ 100% extendable drawers for easy tool access

### TTS93 TROLLEY + 2 DRAWER TOOL SET



**\$4,099**

#### SWTTS93/130

- Includes a 130 piece premium tool set
- 2 Drawers

### TTS93 TROLLEY + 3 DRAWER TOOL SET



**\$4,450**

#### SWTTS93/157

- Includes a 157 piece premium tool set
- 3 Drawers

### Get a **FREE** Stahlwille 25pc Socket Set (Metric & Imperial 3/8" Drive)

When you purchase the TTS93 Trolley 2 or 3 drawer set

#### SW45/45A/21/4 TCSP (25pc)

25 piece set in plastic case with TCS foam

- Quick release reversible ratchet
- Quick release universal joint
- Extension bars: 76mm & 160mm

#### Sockets:

- Metric: 8, 9, 10, 11, 12, 13, 14, 15, 16, 17, 18, 19mm
- Imperial: 1/4, 5/16, 3/8, 7/16, 1/2, 9/16, 5/8, 11/16, 3/4"



**FREE WITH PURCHASE**

**VALUED AT \$874**  
RRP INC GST



### STRAP WRENCH

**SAVE 10%**

**SW12005**

Low-wear strap wrench for clamping, loosening and tightening sensitive and stiff bolted joints such as oil, sand or water filter

- Adapts to odd shapes up to 200mm diameter

**\$89**

### OIL FILTER WRENCH

**SW12007/2**

Oil filter wrench with adjustable strap that fits filters and round screws from 80-110mm

- Hardened anti-slip cams for safety


**\$116**
**SAVE 10%**


### 4PC HOOK TOOL SETS

Contains: 90° degree hook, a 45° degree hook, a rounded hook and a straight hook in either 155 or 250mm

**SW13000-13003/4 250**

**SAVE 10%**
**\$104**
**SW13000-13003/4 155**

### PIN & CENTRE PUNCH SET

**SW105-108/6T**

- Contains: 5 pin punches No. 108: Ø 2.5; 3; 4; 5; 6 mm and 1 centre punch No. 105: Ø 10 mm
- Chrome alloy steel painted silver in pouch


**\$151**
**SAVE 10%**

### 59PC BIT SET WITH DRIVERS

**SWTCS 2 821/59**

- 2 bit ratchet screwdrivers ¼" No. 4008: L. 95; 250 mm
- 1 bit holder ¼" No. 4009: L. 176
- SW1206 59 piece colour coded bit box set


**SAVE 11%**
**\$309**

### SCREW EXTRACTOR SETS

**SW901/5T**


- SW900/6T: For removing sheard screws, bolts and stud screws
- SW901/5T: for easy removal of broken, rusty or damaged bolts
- Comes in durable textile bag

**SW900/6T**
**GREAT PRICE!**

Part Number	Description	PRICE	SAVE
SW900/6T	6 Piece Set	\$184	9%
SW901/5T	5 Piece Set with hex drive	\$223	10%

### BIT BOX SET

**SAVE 10%**
**SW1206**

- 59 piece colour coded bit box set
- Contains TORX®, hex, PHILLIPS® and POZIDRIV® screws


**\$203**

### 7PC DOUBLE-ENDED RATCHET RING SPANNER SETS

**SW25/7**

- Metric scale: 7x8, 9x10, 10x11, 12x13, 14x15, 16x18, 17x19mm
- Straight with bi-hex and 22 teeth
- Chrome plated in robust roll-up tool pouch


**SAVE 9%**
**\$479**

### DOUBLE ENDED OPEN ENDED SPANNER SET

**SW10/5**

- Double open-ended spanner set in sturdy roll-up pouch
- 5 pcs, 8x9, 10x11, 12x13, 14x15, 17x19mm, jaw 15° angle
- Slim construction

**SAVE 10%**
**\$104**






## 12PC OPEN END SPANNER SET

### SW10/12

- Double open-ended spanner set in sturdy roll-up pouch
- 12 pcs: 6x7, 8x9, 10x11, 12x13, 14x15, 16x17, 18x19, 20x22, 21x23, 24x27, 25x28, 30x32mm,
- Jaw 15° angle



**\$339**

**SAVE 10%**

## 17PC LONG COMBINATION SPANNER SET

### SW14/17

- The long force loading point requires less effort with constant torque
- Contents: 6, 7, 8, 9, 10, 11, 12, 13, 14, 15, 16, 17, 18, 19, 20, 21, 22mm

**SAVE 10%**

**\$589**



## MANUAL & DIGITAL CALIPERS

### SW12900N



**\$156**

### SW12900/1N



**\$329**

- Digital: Metal casing with push buttons and large LCD display. Accuracy 0.01 mm/0.0005"
- Manual: metric-inch scales, stainless steel in pouch

## AUTOMOTIVE VOLTAGE TESTER SET



**SAVE 10%**

**\$179**

### SW7756 (for 3-48V)

- Testing device for automotive electrics and electronics
- Voltage indicator by 2 LEDs - voltage and positive/negative polarity

## 6-12V & 24V CAR CIRCUIT TESTER



**SAVE 12%**

**\$29**

### SW12905 (6-12 & 24V)

- For checking the lighting and ignition systems of motor vehicles
- Pointed probe with protective cap and cable with crocodile clip

## 7 PIECE ELECTRONICS SCREWDRIVER SET

**\$142**



**SAVE 10%**

### SW4797

- Flathead sizes: 4, 6, 7 and 8
- Phillips head sizes: 00, 0 and 1

# Abbott & Ashby

## Innovation & Quality

Abbott and Ashby continue to build on the brand's heritage and spirit of innovation and quality. Focusing on innovative technology has led to expanding the Abbott & Ashby range into bench vices, augers and a new and improved finishing attachment (available as a stand-alone attachment or a complete package).



## 8" UTILITY BENCH GRINDER



**SAVE 10%**

**\$210**

### ATBGU/8

- Wheels: 200mm/8" diameter
- 375W, 240V with 10A plug
- 25mm wide grinding wheels with 36 and 60 grit wheels

## FEATURES

- ✓ Powerful induction motor
- ✓ 'Sealed for life' ball bearings for prolonged life
- ✓ Vibration absorption pads on base for smoother running and a better finish
- ✓ Cast Iron body and base
- ✓ Capacitor start-stop motor for max performance
- ✓ Adjustable tool rests for ease of use in different applications



## AA482 LINISHER ATTACHMENT

### AA482

- Belt: 1220 x 50mm, Grit: 240
- Disc: 178mm, Grit: 100
- Contact Wheel: 89mm

✓ Fits most 6" and 8" bench grinders with a max shaft size of 16mm

LEFT OR  
RIGHT  
SIDE  
INSTALLATION

Abbott & Ashby  
**3**  
Year  
WARRANTY

**\$299**

**360°**  
NO TOOLS  
ROTATION

SAVE  
**14%**

PATENT  
PENDING



## Abbott & Ashby

### CRIMPED WIRE GRINDING WHEEL

#### AAWB/200

- Suits most 6" and 8" Bench Grinders
- Diameter: 200mm/8"
- Face Diameter: 25mm/1"
- Bore: 16mm

**\$34**



SAVE  
**20%**

- ✓ Made from crimped brass coated carbon steel wire
- ✓ For general purpose cleaning and deburring

### 2HP BENCH-MOUNTED BELT GRINDER WITH NVR SWITCH

#### ATL1500/482

- 1.5kW (2HP) motor
- 1,220 x 50mm (48 x 2") belt - 240 Grit
- 178mm (7") diameter disc - 120 Grit
- 89mm (3½") contact wheel

✓ Patent pending design - fast changes to the working angle in 6° increments

**360°**  
NO TOOLS  
ROTATION

Abbott & Ashby  
**3**  
Year  
WARRANTY

**\$949**

SAVE  
**14%**



### HEAVY DUTY BENCH VICES



✓ 360° swivel base

✓ Quick release function

- Heavy duty cast iron body
- 3 x Integrated large steel anvil
- Hardened steel jaws with vertical notch
- Integrated pipe jaws

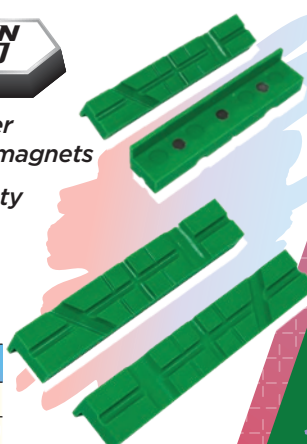
Abbott & Ashby  
**3**  
Year  
WARRANTY

Part Number	Size:	PRICE	SAVE
ATBVHD125	5"	\$215	10%
ATBVHD150	6"	\$275	11%
ATBVHD200	8"	\$385	10%

### VICE JAW MULTIGRIP NYLON MOULDED MAGNETIC [2PK]

- ✓ Fits any vice - simply place over existing jaws, held in place by magnets
- ✓ Multigrip face for holding variety of round or square objects
- ✓ Protects the work piece from scoring or marking

Part Number	Size:	PRICE	SAVE
AAVJR42	4"	\$13	19%
AAVJR62	6"	\$15	21%



### VICE JAW STANDARD ALUMINIUM + RUBBER FACE MAGNETIC [2PK]

- ✓ Fits any vice - simply place over existing jaws, held in place by magnets
- ✓ Protects the work piece from scoring or marking

Part Number	Size:	PRICE	SAVE
AAVJA41	4"	\$18	18%
AAVJA61	6"	\$22	24%

**GREAT PRICE!**







# MAUN

No ordinary plier maker. Since 1944 in the United Kingdom.

Known for their unique pliers that feature jaws that always move in parallel. Maun is known for their passion for problem solving which results in their expanded range being engineered to perfection to reduce effort and simplify the job at hand with ease and accuracy.

## MAUN WAD PUNCH KITS

A high-quality punch kit designed for precision cutting of washers, gaskets, and seals in metric and imperial sizes. Ideal for engineers, mechanics, and tradespeople working in multiple measurement systems.

- ✓ Hardened cutting edges for durability
- ✓ Suitable for leather, rubber, plastic, and soft materials
- ✓ Comes in a compact, organised case

### MA1000/05

- Sizes: 5, 6, 8, 10, 12.5, 16, 20, 25, 32mm



**\$229**



**\$219**

### MA1001/05

- Sizes: 1/4, 5/16, 3/8, 7/16, 1/2, 5/8, 3/4, 7/8, 1"

**SAVE 7%**

# COAST

## Quality for a century

Since the very beginning, we've made innovations that make people's lives easier and jobs safer. And we're still at it. It all started with a salmon fillet knife on Oregon's coastline. And today it's world-class LED optical technology and pocket tools. One thing has never changed: COAST innovations are trusted tough.

## PURE BEAM FOCUS FLASHLIGHT

### COAXP11R

Light-weight, four-mode multibeam flashlight

- ✓ 3000 lumens (turbo)
- ✓ 280m distance (turbo)
- ✓ 200hr runtime (moon glow)

**SAVE 15%**

**\$169**



## 8000 LUMEN TURBO FLASHLIGHT

### COAXP40R

Rechargeable 8000 lumen torch with Power IQ OLED real-time display with external device charging



**SAVE 22%**

**\$289**

- ✓ 8000 lumens (turbo)
- ✓ 230m distance (turbo)
- ✓ 36hr runtime (moon glow)

## 410 LUMEN POCKET PURE BEAM FLASHLIGHT

### COAHX5

Purebeam focusing pocket light with AA NiMH and Lithium-ion Batteries included

Max performance with Lithium-ion:

- ✓ 410 lumens
- ✓ 132m distance
- ✓ 1hr runtime (3hr Alkaline)

**\$53**



**SAVE 10%**

## RECHARGEABLE HEAD LAMP

### COAXPH25R

410 lumen professional series headlamp

- ✓ 104m beam distance (high)
- ✓ 9hr 30m runtime (low)
- ✓ Pure beam focus



**\$89**



## 1000LUM TRI-COLOUR HEADLAMP

### COARL20RB

1,000 lumen, tri-colour headlamp with rear red lighting and built-in rechargeable booster battery

- ✓ 1,000 lumens (combined)
- ✓ 187m beam distance (spot)
- ✓ 34hr runtime (flood low)
- ✓ Variable light control technology

**\$109**

SAVE 16%



## COAST

## LED 150 MULTI-TOOL

### COALD150

- LED150 Multi-tool is packed with 13 tools including spring-loaded pliers with wire cutter, 7.6cm blade, 2x built in LED and more.
- Comes with 2 x CR1616 batteries.

SAVE 10%

**\$89**



## 500 LUMENS PURE BEAM FOCUSING HEADLAMP

### COAHL7

Purebeam focusing headlamp with variable light control technology - from ultra wide flood beam to a long reaching spot beam by twisting the bezel. Includes hard hat strap.

- ✓ 500 lumens (high)
- ✓ 125m distance (high)
- ✓ 70hr runtime (low)

**\$76**

SAVE 10%



## 800 LUMEN TRI-COLOUR RECHARGEABLE HEADLAMP

### COAFLX40R

Powerful and compact - gives you the versatility of four modes from low to turbo and is usb rechargeable

- ✓ 800 lumens (turbo)
- ✓ 137m distance (turbo)
- ✓ 10hr runtime (low)

**\$62**

SAVE 10%



## UTILITY BEAM BODYLIGHT

### COAHX4

Magnetised clip on utility beam bodylight with white and red light. 2 x AAA included.

- ✓ 80 lumens
- ✓ 13m distance
- ✓ 3hr 45min runtime

**\$32**

SAVE 11%



## 435 LUMEN PURE BEAM FOCUSING HEADLAMP

### COAFL75

FL75 dual colour pure beam focusing LED headlamp with hardhat clips, reflective safety strap and 3 x AAA batteries included

- ✓ 435 lumens (high)
- ✓ 143m beam distance (high)
- ✓ 17hr runtime (low)

**\$98**

SAVE 10%







Made in England to high quality standards since 1923

Thor have specialised in producing soft faced hammers, soft impact hammers and mallets that provide a non damaging striking solution for any problem where a hand operated tool is required.



**THOR**  
SOFT FACED HAMMERS

## COPPER / RAWHIDE HAMMERS

The malleable Iron head and the Copper/ Rawhide faces provide the weight for the blow and the faces prevent damage to most items being struck

Part Number	Description	PRICE
TH310	830g Copper Hammer 32mm Face	\$81
TH210	710g Copper & Rawhide Hammer 32mm face	\$89



## NYLON FACE HAMMER

### TH720

- Chrome plated Zinc heads comes fitted with standard screw in Nylon faces
- 2.2kg (5lb) 63mm



Faces are designed to wear and are replaceable by hand

## THOREX PLASTIC HAMMERS

- Thorex Plastic Hammer with chrome plated Zinc head and plastic handle
- Fitted with 2 orange plastic heads

Part Number	Weight	Face Diameter	PRICE
TH412	675g	38mm	\$54
TH414	900g	44mm	\$64
TH416	1,250g	50mm	\$84



## WHITE RUBBER MALLET

- One-piece rubber head with self locking handle

Part Number	Description	PRICE
TH953W	625g (1½lb), 64mm head with wood handle	\$35
TH954W	850g (2lb), 74mm head with wood handle	\$46
TH957WFG	1,460g (3¼lb), 90mm head with fibreglass handle	\$77



# TOP TOOLS

## Best Prices

**FULL THROTTLE Deals**  
NOV '25 TO JAN '26 2025 CATALOGUE

VIEW  
ONLINE



Available from your local trade specialist:

**RAW TOOLS**  
[www.rawtools.com.au](http://www.rawtools.com.au)  
Noel - 0409 660 943